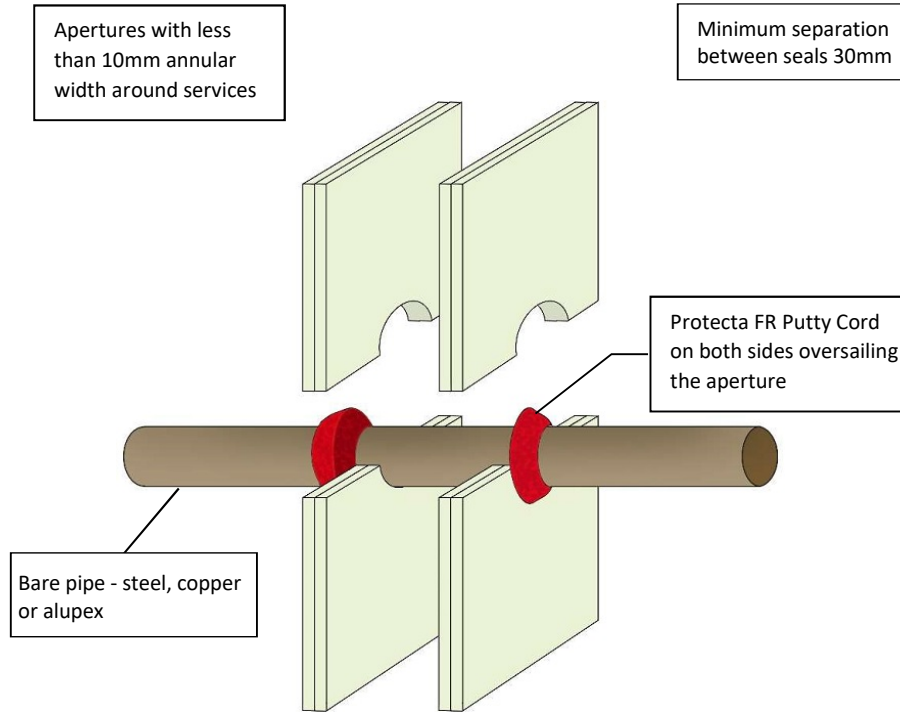


Protecta FR Putty Cord - Plasterboard Wall - Bare Pipe

Installation Instructions

1. Before installing Protecta® FR Putty Cord ensure that the surface of all service penetrations and surrounding construction is wiped clean, dry, free from all loose contaminants, dust, oils and grease.
2. Place the Putty Cord around the services so that it seals the services to the wall all the way round.
3. Press the Putty Cord into the wall and services with your thumbs to form a fillet or V shape joint, ensuring good contact is made all the way round the services and the wall.
4. Pipes may be Steel, Copper or Alupex (PEX-AL-PEX). Note that copper and alupex systems are AS1530 compliant only for closed systems.
5. The putty cord is designed to be easily fitted around service penetrations where the gap around the services is very small, or there is no gap at all so a conventional fire rated sealant is impossible or difficult to fit due to the required depth and backing material. The putty cords are fitted covering the gap around the services and do not need to fill the gap to any required depth.



**FRRs shown are for double layer 13mm walls. Where single layer 13mm walls have an FRR lower than those listed then the FRR of the seal must be reduced to match the FRR of the wall.

System/FPA Register ID# FC352

Products	Protecta FR Putty Cord
Application	Fire stopping of bare pipes in flexible walls
Construction	Minimum wall thickness of 100mm and comprise steel or timber studs lined on both faces with minimum 1 layer of 13mm thick board**

Fire & Sound Classification

Steel up to 22mm	FRR -/120/60
Steel up to 30mm	FRR -/120/45
Steel up to 324mm	FRR -/120/-
Copper up to 6mm	FRR -/120/120*
Copper up to 12mm	FRR -/120/60*
Copper up to 54mm	FRR -/120/-*
Alupex up to 16mm	FRR -/120/120*
Alupex up to 20mm	FRR -/120/90*

* Closed systems only

As a part of our policy of on-going product development and testing, we reserve the right to modify, alter or change product specifications without giving notice. All information contained in this document is given in good faith and is provided for guidance only. Any drawings provided are for illustrative purposes only. As Polyseam has no control over the methods or competence of installation and of prevailing site conditions, no warranties, expressed or implied, is intended to be given as to the actual performance of the product mentioned or referred to herein and no liability whatsoever will be accepted for any loss, damage or injury arising from the use of the information given.

For all technical details on the products specified please refer to the technical data sheets that can be found on www.firestopcentre.co.nz

Signed and approved:

Sheet size: **A4**
 Drawn date & no: 29/5/18

Scale: **NTS**
 Drawn by: **K.B**